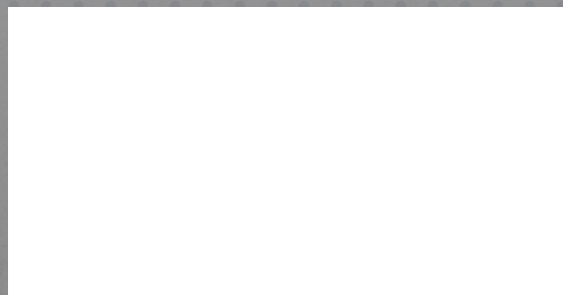




Ash Technologies Ltd.  
B5, M7 Business Park  
Naas,  
Co. Kildare,  
Ireland.  
+353-45-882212  
info@ash-vision.com  
www.ash-vision.com

Digital Microscope  
Inspection Systems





**FULL HD 1080p**  
Image Quality

Image Capture  
to USB key

Integrated, Real-Time,  
On-screen Dimensioning  
Grids & Cursors.

## Inspex HD 1080p Vesa FI801-018

The Inspex HD 1080p is a high definition camera inspection system offering superb 1080p full HD image quality, colour reproduction, contrast and resolution. Its versatile design makes it compatible with a wide range of mounting options. Real-time on-screen dimensioning is provided by integrated XY grids and cursors.

### Key Features:

- Accurate & detailed inspection with superb HD image resolution, dynamic range of magnification levels & integrated LED illumination.
- Real-time on-screen dimensioning provided by integrated XY grids & cursors
- Less operator fatigue & improved production efficiencies due to ergonomic design enabling user to sit or stand in a comfortable and safe posture providing relief from back, neck and eye strain typically associated with traditional microscopes.
- Easy documentation & traceability for accurate quality control records using image capture to USB key.

### Applications:

The Inspex HD 1080p is suited for repair & rework, quality control & failure diagnosis processes in industries such as: Automotive, aviation, electronics, engineering, forensics, jewellers, medical devices, packaging & labelling, pharmaceuticals and security.



## KP1 External Keypad FI 801-008

The optional KP1 unlocks integrated real-time on-screen dimensioning grids and cursors. It also allows access to a variety of functions including 3 Memory Presets, Exposure and Focus, Zoom, Brightness, LED Intensity, Image Capture...

### MAGNIFICATION

| Lens (Dioptre) | Focal Distance (mm) | Max Height (mm) | Min Height (mm) | Minimum Magnification* Optical/Digital | Maximum Magnification* | Field of view at minimum mag. (mm) | Field of view at maximum mag. (mm) Optical/Digital | Depth of field           |
|----------------|---------------------|-----------------|-----------------|--|------------------------|------------------------------------|--|--------------------------|
| 4              | 250                 | 250             | 205             | 1.8                                    | 51/98                  | X: 280<br>Y: 164                   | X: 10.2/5<br>Y: 5.5/2.4                            | 100mm @1.8x<br>10mm @10x |
| 5              | 200                 | 200             | 170             | 2.3                                    | 62/122                 | X: 225<br>Y: 130                   | X: 7.9/3.9<br>Y: 4.2/2.1                           | 80mm @2.5x<br>6mm @10x   |
| 10             | 100                 | 100             | 90              | 4.4                                    | 121/237                | X: 70<br>Y: 63                     | X: 5/2.4<br>Y: 2.2/1.1                             | 2mm @30x<br>0.5mm @50x   |

### Technical Specifications

| Specifications                  | Vesa (FI801-018)                                | Table (FI 801-017)                            |
|---------------------------------|---|---|
| Zoom Range (with supplied lens) | 5D Lens – 2.3x to 122x                          | 4D lens – 1.8x to 98x                         |
| Camera Resolution               | HD 1080p, 1980 x 1080 at 50/60 Hz               | HD 1080p, 1980 x 1080 at 50/60 Hz             |
| Monitor Connections             | HDMI / DVI                                      |   |
| Monitor Requirements            | HD Ready or Full HD (recommended)               |   |
| Dimensions                      | 37cm x 12cm x 14cm                              | Table 24cm x 41cm                             |
|                                 |   | Folded Height 11cm, Raised Height 42cm Weight |
| Weight                          | 1.2kg   | 2.5kg   |
| Power                           | 8 Watts   |   |
| Operating Temperature           | Storage: -10 C to +60C<br>Operating +5C to +40C |   |
| Image capture                   | USB 2.0 highspeed                               |   |



## Inspex HD 720p

The Inspex HD 720p is a high definition camera inspection system offering HD image quality, colour reproduction, contrast and resolution. Its versatile design makes it compatible with a wide range of mounting options. Real-time on-screen dimensioning is provided by integrated XY grids and cursors.



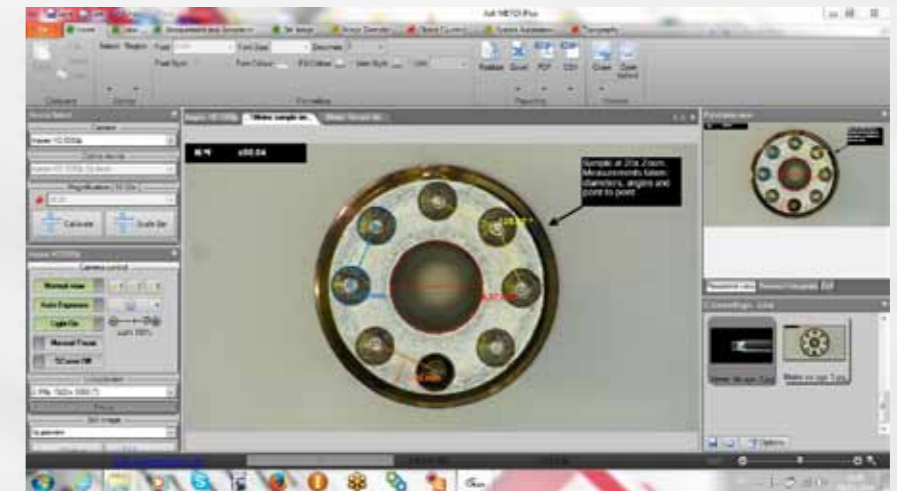
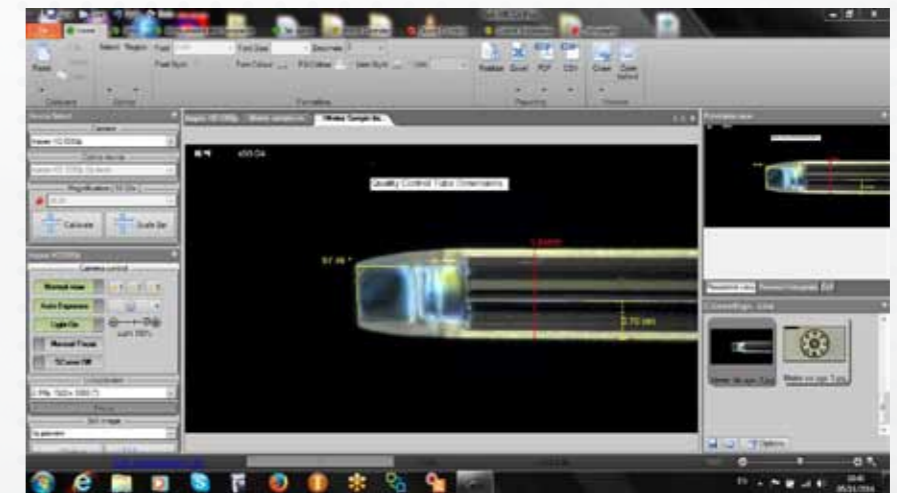
### Data Capture Software FI 801-007

The optional capture cable allows Inspex HD 720p to save a HD frame to PC. Images can then be used for further processing or measurement analysis.



### Technical Specifications

| Specifications                         | Inspex HD Table FI 801-011                                       | Inspex HD VESA FI 801-010                           |
|--|--|---|
| <b>Zoom range (with supplied lens)</b> | 4D lens – 2.0x to 48x  | 5D Lens – 2.5x to 60x                               |
| <b>Camera resolution</b>               | HD 720p, 1280 x 720 at 50/50 fps                                 | HD 720p, 1280 x 720 at 50/50 fps                    |
| <b>Monitor connections</b>             | HDMI/DVI   | HDMI/DVI  |
| <b>Monitor requirements</b>            | HD ready 720p with DVI or HDMI input                             | HD ready 720p with DVI or HDMI input                |
| <b>Dimensions</b>                      | Table area: 24 x 41cm, Folded height: 9cm<br>Raised height: 40cm | 45cm x 12cm x 10cm                                  |
| <b>Weight</b>                          | 1.1kg  | 1.1kg   |
| <b>Power</b>                           | 8 Watts  | 8 Watts   |
| <b>Operating temp.</b>                 | Storage: -10°C to +60°C<br>Operating: +5°C to +40°C              | Storage: -10°C to +60°C<br>Operating: +5°C to +40°C |



## Metex PC Measurement Software

The perfect Inspex partner, by any measure! Metex allows advanced measurement and live Full HD Video to your PC. With the included USB 3.0 interface Metex is ready to go out of the box.



Point to Point Measurement



Annotation



Image Comparison



View & Record Full HD Images & Video



Output Reports



Multiple Languages

### Key Features:

- Obtain detailed dimensions for non-contact testing
- Angle, radius, centre point distances and perimeter values
- Annotation with customisable colours and font types
- Image Comparison
- View and record Full HD images and video
- Metric and Imperial units
- Output reports in common formats such as excel, pdf, csv
- Multiple Languages

### System Requirements & Specifications

|                              |  |
|------------------------------|--|
| <b>Hardware</b>              | Compatible with most major chipsets and expended USB 3.0 via PCIe Gen1.1 x1, USB 2.0 |
| <b>Operating System</b>      | Windows 7,8,8.1  |
| <b>CPU</b>                   | The processing of the video is done by the ASH Interface and will not occupy the CPU |
| <b>Video Output</b>          | Up to 1920 x 1200 60fps  |
| <b>Dimensions</b>            | 84.25 x 42.80 x 12.60 (LxWxH mm)   |
| <b>Power</b>                 | <= 2.5W  |
| <b>Operating Temperature</b> | Operating: 0 - 50 C<br>Storage: -20 - 70 C   |



Ergonomically positioned buttons for single handed access to all functions

Simple X, Y on-screen dimensioning with cursor & grid functions



Rechargeable via Micro USB

Adjustable LED illumination for brightness & left/right direction control

Flip out focus & stability leg

### ion 4.3" Inspection Magnifier FI 800-102

The Ion 4.3 is an award winning inspection magnifier that provides a crystal clear image for the user. Suitable for quick and immediate use, the Ion is fast to start, comfortable to hold and highly intuitive to use as the product has been designed to replicate the look and feel of an optical magnifier.

The Ions display delivers an unrivalled sharp, bright and high contrast image. The Ion 4.3s stunning colour image and wide viewing angle provides comfortable use in awkward to access places and in poor lighting conditions. Its unique patent applied for dimensioning grids and cursors enhance the capability and efficiency of decision making for inspection operators and technicians.

### Key Features:

- **Accurate & detailed inspection of a wide variety of objects enabled** through lossless image quality & super sharp magnification up to 14x with high resolution TFT display and adjustable LED illumination.
- **Instant on screen measurement for quick & cost effective quality assurance** provided by integrated on screen XY dimensioning grids & cursor functions.
- **Easy recording & traceability of one hundred images with date stamp** using image capture software for accurate quality control records.
- **Mobile visual inspection tool suitable for awkward to access areas & poor lighting conditions** due to its compact, portable design.
- **Unique Liquid lens technology provides** a wide focus range, fast response time, excellent optical quality & low power consumption

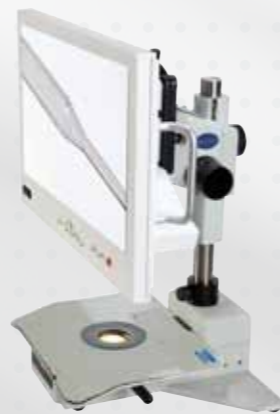
### Technical Specifications

| Specifications             | Ion 4.3 FI 800-102   |
|----------------------------|--|
| Screen size and resolution | 4.3" diagonal TFT display, 480x272   |
| Magnification              | Far focus: 4x-8x & Near focus: 7x-14x  |
| Image storage mode         | 100 images in 480 x 272 pixels, 24-bit bitmap format transferable to PC via USB link |
| Depth of field             | 3.5cm in overview, 1.5cm close   |
| Dimensioning cursors/grids | Yes  |
| Sensor                     | 3MP CMOS, RGB565 video at 30fps  |
| Battery - Lithium Ion      | Up to 5 hours, charge time 4 hours   |
| Connection cable           | Micro USB cable  |
| Charger supply             | 100V - 240Vac 50/60Hz with supplied adaptor  |
| Unit supply voltage        | 5V dc, micro-USB connector   |
| Weight                     | 225 grams  |





VESA compatible arm



Attaches to microscope stand

## Vista HD FI 802-002

The Vista HD is a fully integrated, high definition camera inspection system where HD camera, LED lighting & 19" monitor are contained in one single unit for fast, ergonomic and reliable optical inspection.

### Key Features:

- **Accurate & detailed inspection of a wide variety of objects enabled by** high quality HD image resolution, and a high performance HD camera with integrated LED illumination.
- **Instant on screen measurement for quick & cost effective quality assurance** provided by integrated on screen XY dimensioning grids & cursor functions.
- **Suitable for in line quality assurance inspection processes** using a unique 19" integrated display with all features & functions integrated to the one unit.
- **Less operator fatigue & improved production efficiencies due to its ergonomic design** enabling people to adjust their work position and allowing for group discussions & training.

### Technical Specifications

| Specifications    | Vista HD FI 802-002                            |
|-------------------|--|
| Dimensions        | 45cm x 31cm x 12cm                             |
| Weight            | 3.95kg   |
| Screen Size       | 19" display                                    |
| Zoom              | +3D lens as standard: Zoom range: 1.35x to 37x |
| Camera resolution | HD720p 1280x720 50/60 Hz                       |
| Power             | 48 Watts                                       |

# Optional Accessories

## KPI Keypad FI 801-008

Features:

- Activate Integrated XY Grids & Cursors for Dimensioning
- Camera, lighting functions & settings
- Adjust object viewing position using customisable on screen cross hairs
- Magnification, auto/manual focus & exposure
- 3 memory programmable pre-sets
- High contrast mode for enhancing objects like IC's
- Image freeze and capture of images to PC using capture cable



## Metex Measurement Software FI 803-001

- Obtain detailed dimensions for non-contact testing
- Angle, radius, centre point distances and perimeter values
- Annotation with customisable colours and font types
- Image Comparison
- View live Full HD Video and Capture images
- Metric and Imperial units
- Output reports in common formats such as excel, pdf, csv
- Multiple Languages
- Compatible with Win XP, Vista, 7 & 8
- USB 3.0 PC Interface Included

# Metex



## Data Capture Software for Inspex HD 720p FI 801-007

- Allows you to instantly capture a HD frame
- Images can then be used for further processing or measurement analysis
- Images can be easily stored in a variety of common formats including bitmap, JPEG & TIFF



**Ergo Illuminated Rigid Stand with Focus Block**

AI 801-009



**Ergo Rigid Stand with Focus Block**

AI 100-008



**X-Y Stage for Backlight with Scale**

AI 100-011



**X-Y Stage**

AI 100-010



**DESA Flexible Arm**

MR 406-510



**Vesa Mounting Arm for InspeX & Monitor**

MR 350-322



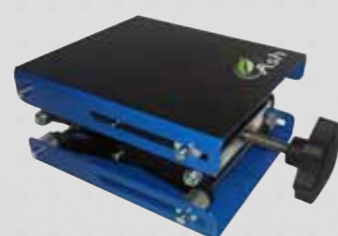
**X-Y Stage 15.7" x 14.1"**

MR 801-412



**Height Adjustable Stage**

6" x 6" MR 801-413  
8" x 8" MR 801-420



**Oblique Tilting Stage**

MR 801-414



## Lighting

**8-Point LED Ring Light**

AI 100-012



**Diffused LED Dome Light**

AI 100-001



**LED Fibre Optic Illuminator**

AI 100-002



**Available Attachments**

(Sold separately):

- Single or Dual Gooseneck AI 100-005, 004
- Ring Light AI 100-006
- Colour Filter Kit AI 100-003
- Polarizer AI 100-007

**Foot Switch**

MR 801-415



**52mm Lenses, 3,4,5,10x, Polarising for InspeX**

Lens 3x MR 280-129  
Lens 4x MR 280-125  
Lens 5x MR 280-123  
Lens 10x MR 280-124  
Polarising MR 280-125



**Monitor 24"**

MR 801-416



**INSPEX Hard Case**

Table MR801-561  
Vesa MR801-562



**INSPEX Soft Case**

MR 801-566



**ION Hard Case**

MR 801-567



## Other Accessories