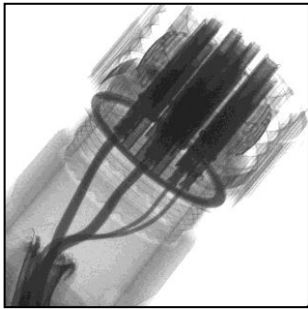


Application:

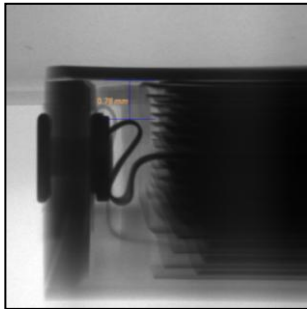
- Electronic Component
 - Camera Module, Connector, Battery, LED
- Automotive Component
 - Connector, Harness Cable, Switch
- Internal Structure / Hidden Component

Systems:

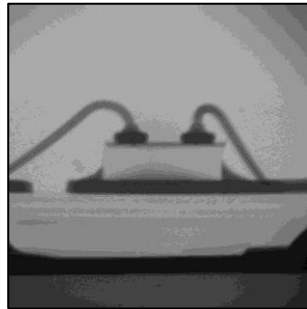
- X-eye SF160A (2D) / SF160ACT (3D)
- X-eye 5000BTS
- X-eye 3000A
- X-eye Micro CT
- X-eye 7000S



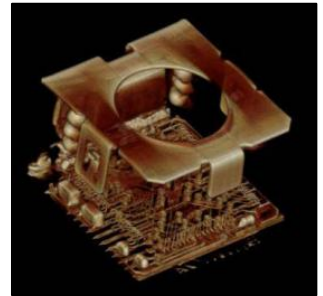
Connector (2D)






Battery (2D)



LED (2D)



Camera Module (3D CT)

	X-eye SF160A	X-eye 5000BTS	X-eye Micro CT
			
X-ray Tube	160kV Open Tube / 1um Spot Size	90kV Closed Tube / 5um Spot Size	90kV Closed Tube / 5um Spot Size
Detector	4/6" Digital Image Intensifier	2/4" Digital Image Intensifier	2" Flat Panel X-ray Detector
Manipulator	460mm x 510mm Table Size	460mm x 340mm Table Size	Max. Ø50 x 100(H) mm Chuck Type (Horizontal)
Axis Control	X,Y,Z,T,R 5-axis Full Strokes	X,Y,Z,T 4-axis Strokes	X,Y,Z, R 4-axis Strokes
Dimension	1550(W) x 1750(D) x 1850(H) mm	1400(W) x 1100(D) x 2000(H) mm	850(W) x 800(D) x 1200(H) mm
Application	PCBA, Semiconductor Packaging Inspection, Failure Analysis, 3D CT*	PCBA, Semiconductor Packaging, Electronic Component Inspection	Semiconductor Packaging, Electronic Component Failure Analysis, 3D CT*